



BRYDIE

COLLECTION

Impeccably outfitted and unapologetically refined - BRYDIE wears its sophistication like a well-cut suit. Inspired by the precision of Savile Row tailoring and timeless style, this sofa infuses any space with sartorial elegance.

With every seam and every curve considered, BRYDIE sets a formal tone. Its tucked proportions, no-sag steel spring suspension, solid timber railing, high resilience polyurethane foam core and feather-down inners, nod to the structure of a well-conceived suit and the effect is definitively gentlemanly.

Elliptical metal legs create a floating illusion, underscoring this sofa's innate sophistication.

Alternatively, a more organic, grounded effect is achieved with the warmth and texture of solid oak legs.

BRYDIE has evolved into a range of lounging, lounge chairs, ottomans and accompanying low tables, cementing its place in highly successful commercial settings. That said, it has certainly left its mark on residential interiors. When fashioned with luxurious upholstery fabrics - and when paired with DIDIER'S softer silhouettes - the result is a dynamic combination of elevated presence and utility.

BRYDIE ranges from single seating to the extended 4-seater lounging, with or without arms.

MATERIALS	FINISHES	FEATURES	WARRANTY
FSC kiln-dried Australian hardwood & FSC multiply. No-sag steel spring suspension. High resilience polyurethane foam core. Feather/down wrap seat cushioning. Foam core feather/down wrap back cushions. Loose scatter cushions feather/down fill.	Upholstered in a refined choice of fabrics or leathers. Metal legs in polished brass, bright chrome, black or white. Timber legs in solid oak, either natural clear or stained to colour.	Harmonious & formal lounging collection. Upholstered lounges & ottomans of various sizes. Durable no-sag steel spring suspension. Premium foam layering for comfort & support. Bespoke custom upholstery in fabrics or leathers. Solid Oak or slender steel elliptical legs.	Five year manufacturing warranty covering defective craftsmanship that is subject to normal use. Please contact Didier for full terms and conditions.

BRYDIE Lounge Range: Ellipse Leg



BR-LG[ELP]110 1100 W x 1030 D x 800 H (SH 400)



BR-LG[ELP]176 1760 W x 1030 D x 800 H (SH 400)



BR-LG[ELP]211 2110 W x 1030 D x 800 H (SH 400)



BR-LG[ELP]241 2410 W x 1030 D x 800 H (SH 400)



BR-LG[ELP]266 2660 W x 1030 D x 800 H (SH 400)

BRYDIE Setee Range: Ellipse Leg



BR-SET[ELP]90 900 W x 1030 D x 800 H (SH 400)



BR-SET[ELP]180 1800 W x 1030 D x 800 H (SH 400)



BR-SET[ELP]210 2100 W x 1030 D x 800 H (SH 400)



BR-SET[ELP]240 2400 W x 1030 D x 800 H (SH 400)

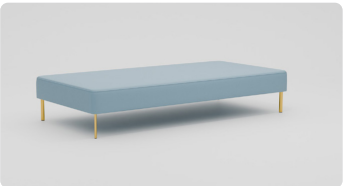
BRYDIE Ottoman Range: Ellipse Leg



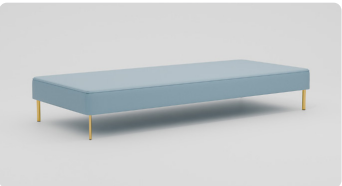
BR-OT[ELP]80x80 800 W x 800 D x 400 H



BR-OT[ELP]176x80 1760 W x 800 D x 400 H



BR-OT[ELP]211x103 2110 W x 1030 D x 400 H



BR-OT[ELP]241x103 2410 W x 1030 D x 400 H

BRYDIE Lounge Range: Oak Leg



BR-LG[OAK]110 1100 W x 1030 D x 800 H (SH 400)



BR-LG[OAK]176 1760 W x 1030 D x 800 H (SH 400)



BR-LG[OAK]211 2110 W x 1030 D x 800 H (SH 400)



BR-LG[OAK]241 2410 W x 1030 D x 800 H (SH 400)



BR-LG[OAK]266 2660 W x 1030 D x 800 H (SH 400)

BRYDIE Setee Range: Oak Leg



BR-SET[OAK]90 900 W x 1030 D x 800 H (SH 400)



BR-SET[OAK]180 1800 W x 1030 D x 800 H (SH 400)



BR-SET[OAK]210 2100 W x 1030 D x 800 H (SH 400)



BR-SET[OAK]240 2400 W x 1030 D x 800 H (SH 400)



BR-SET[OAK]280 2800 W x 1030 D x 800 H (SH 400)

BRYDIE Ottoman Range: Oak Leg



BR-OT[OAK]80x80 800 W x 800 D x 400 H



BR-OT[OAK]176x80 1760 W x 800 D x 400 H

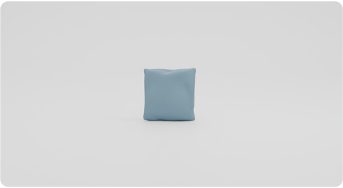
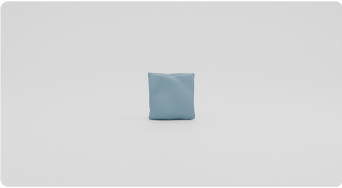


BR-OT[OAK]211x103 2110 W x 1030 D x 400 H



BR-OT[OAK]241x103 2410 W x 1030 D x 400 H

BRYDIE Scatter Cushions



BR-CUSH40x40



BR-CUSH45x45



BR-CUSH50x50



BR-CUSH55x55

CARE INSTRUCTIONS:

- Dust and vacuum upholstery regularly to remove dry dirt and dust.
- Dust and wipe legs with damp cloth.
- Fabric and leather companies have their own 'care and maintenance' instructions for each product.
- Didier recommends always reading the label of any cleaning products and not using cleaning agents containing abrasives or solvents.

ENVIRONMENTAL STATEMENT:

At Didier, we believe good design should enhance life without costing the earth. Our work is rooted in responsibility - sourcing sustainable materials, minimising waste in production and collaborating closely with skilled makers, prioritising ethical supply chains. We design for longevity, creating enduring pieces that stand the test of time. To us, sustainability is not a trend, but a guiding principle, that is woven into every stage of our artistic process and every original idea we bring to life.